



Fyreshield™ Fire Rated Roller Shutter Systems

The Fyreshield™ range of fire rated roller shutter systems are designed and manufactured in New Zealand for New Zealand building conditions.

Applications

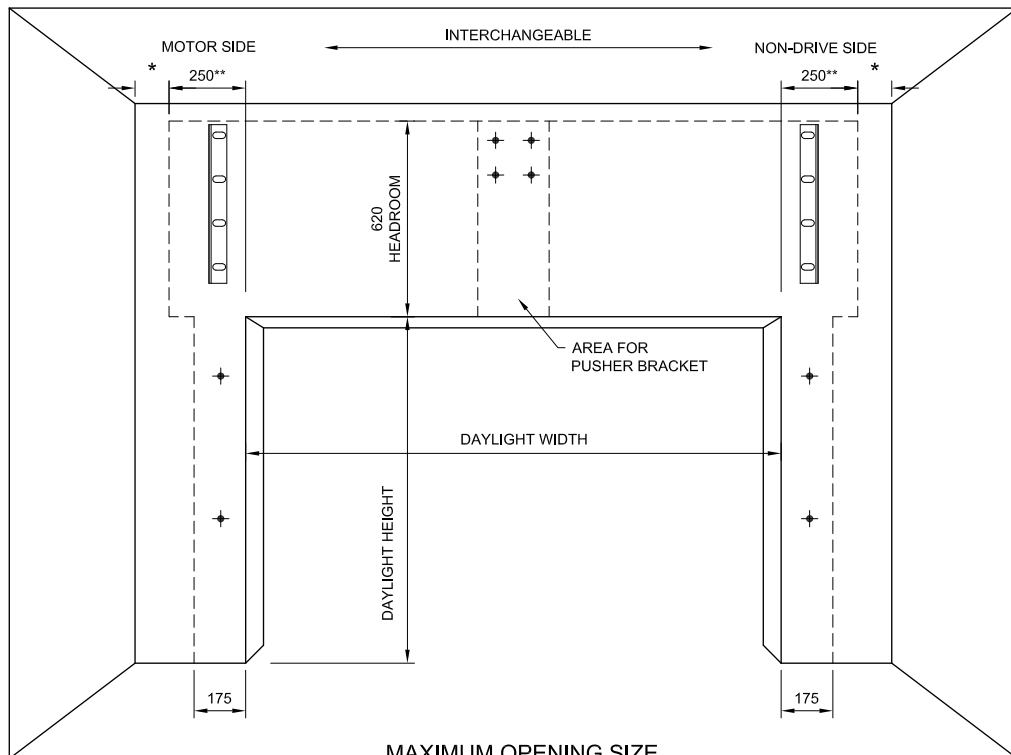
Fyreshield™ is designed for use where a fire wall has a service opening, ie: fire separations in sports stadia and arenas (eg. food concession areas), airports and industrial complexes.

Features

- Designed and manufactured in New Zealand for New Zealand building conditions (including masonry and timber stud construction)
- Fire Tested in New Zealand to AS 1530 Part 4, in a recognised New Zealand testing facility
- Fire Ratings up to -/240/- in masonry and -/60/- in modified plasterboard walls (contact Metalbilt® for design parameters)
- Fyreshield™ for timber stud construction can be supplied with the proprietary steel post fixing system with expansion joints
- Automatically activated by a signal from any installed detector system e.g. smoke or heat detector
- Includes a controlled descent safety mechanism to limit closing speed
- Hand chain or motorised options
- Shutters are custom made to fit the size of opening and structure of the building (contact Metalbilt® for design parameters)
- An extensive range of powder coat colours can be offered along with Zinalume coatings

*55 years of manufacturing experience and continuous refinement.
Service and repairs, 24 hours a day, on all makes of commercial doors.*

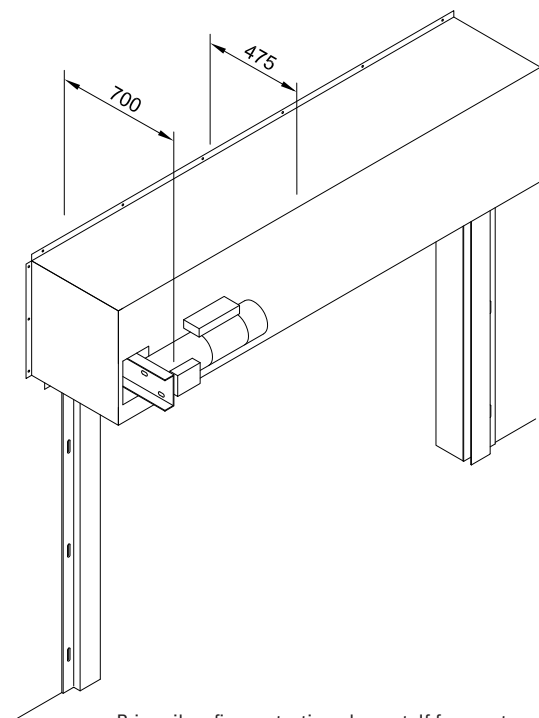
Fyreshield™ Fire Rated Roller Shutter Systems – Specifications



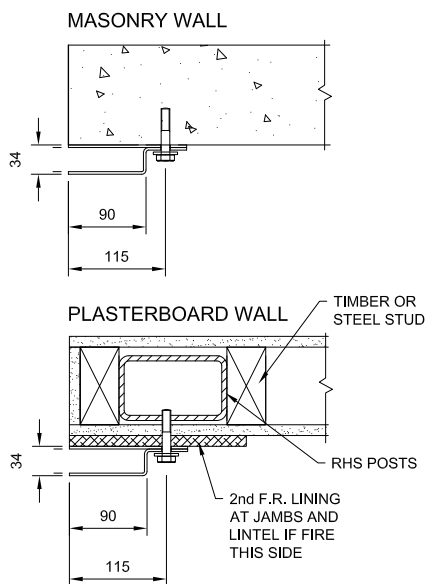
MAXIMUM OPENING SIZE

FIRE RATING	WALL TYPE	SIZE	HEIGHT	WIDTH
Up to -/240/-	Masonry	40m ²	6.0m	7.5m
Up to -/60/-	Plaster Board	23m ²	4.0m	8.0m

* EXTRA 150mm SIDEROOM CLEARANCE REQUIRED FOR INSTALLATION OF HOOD
 ** WINDLOCKED GUIDES REQUIRE ADDITIONAL SIDEROOM - REFER TO METALBIT AS FIXING LAYOUTS CHANGE



Primarily a fire protection element. If frequent use is envisaged, consider additional means of obtaining security.



Refer to datasheets for approved jamb and lintel construction.

Curtain

Roll formed, galvanised steel interlocked slats. Slats can be replaced individually if damaged. Powder coating available.

Bottom bar

Back to back galvanised steel angles are fitted to lower edge of curtain.

Guides

Constructed from brake pressed 3mm galvanised steel and have a depth of 90mm. Windlocking available for exposed doors.

Barrel

Fabricated from mild steel tube with a minimum diameter of 165mm. Helically wound counterbalance springs are contained within the barrel.

Operation options

- **Hand chain**
Low speed hand chain via gearbox and rollerchain drive. For frequently used doors motorising is recommended.
- **Motorised**
3 phase .37kW with auto hand chain. Fire shutters operate at lower speeds than unrated shutters

Activation options

- **PP 100** (Hand chain only)
Activation by 24VDC fire signal and fusible link. Manual resetting.
- **PP 300** – Activation by fusible link only. Manual resetting.
- **PP 400** (Motorised only)
Activation by 24VDC fire signal and fusible link. 230V auto reset when reopened or pull cord for manual resetting of activator solenoid. See FCP below.

Access to link and cables required for manual resetting.

Recommended Fire control panel option

Available for PP 400 only. Audio and visual warning, time delay, battery back-up for activator, 2 zone monitoring, pre-set programmes.

Standard doors meet the 5 year durability requirements of the N.Z.B.C. Details available on request.

We reserve the right to alter specification without notice and without incurring obligation.

Contact details of your nearest Metalbit® representative:

Auckland
Postal Address
 PO Box 71169 Rosebank
 Auckland 1348 New Zealand
Street Address
 26 Timothy Place Avondale
 Auckland 1026 New Zealand
Phone 09 828 1167
Fax 09 828 6358
Email mbilt.auck@metalbit.co.nz

Christchurch
Postal Address
 PO Box 6033 Upper Riccarton
 Christchurch 8442 New Zealand
Street Address
 25 Baigent Way Middleton
 Christchurch 8024 New Zealand
Phone 03 338 2600
Fax 03 338 4386
Email mbilt.chch@metalbit.co.nz

Wellington
Postal Address
 PO Box 38933 Wellington Mail Centre
 Lower Hutt 5045 New Zealand
Street Address
 33 Marsden Street Melling
 Lower Hutt 5010 New Zealand
Phone 04 568 2933
Fax 04 568 7337
Email mbilt.well@metalbit.co.nz

